

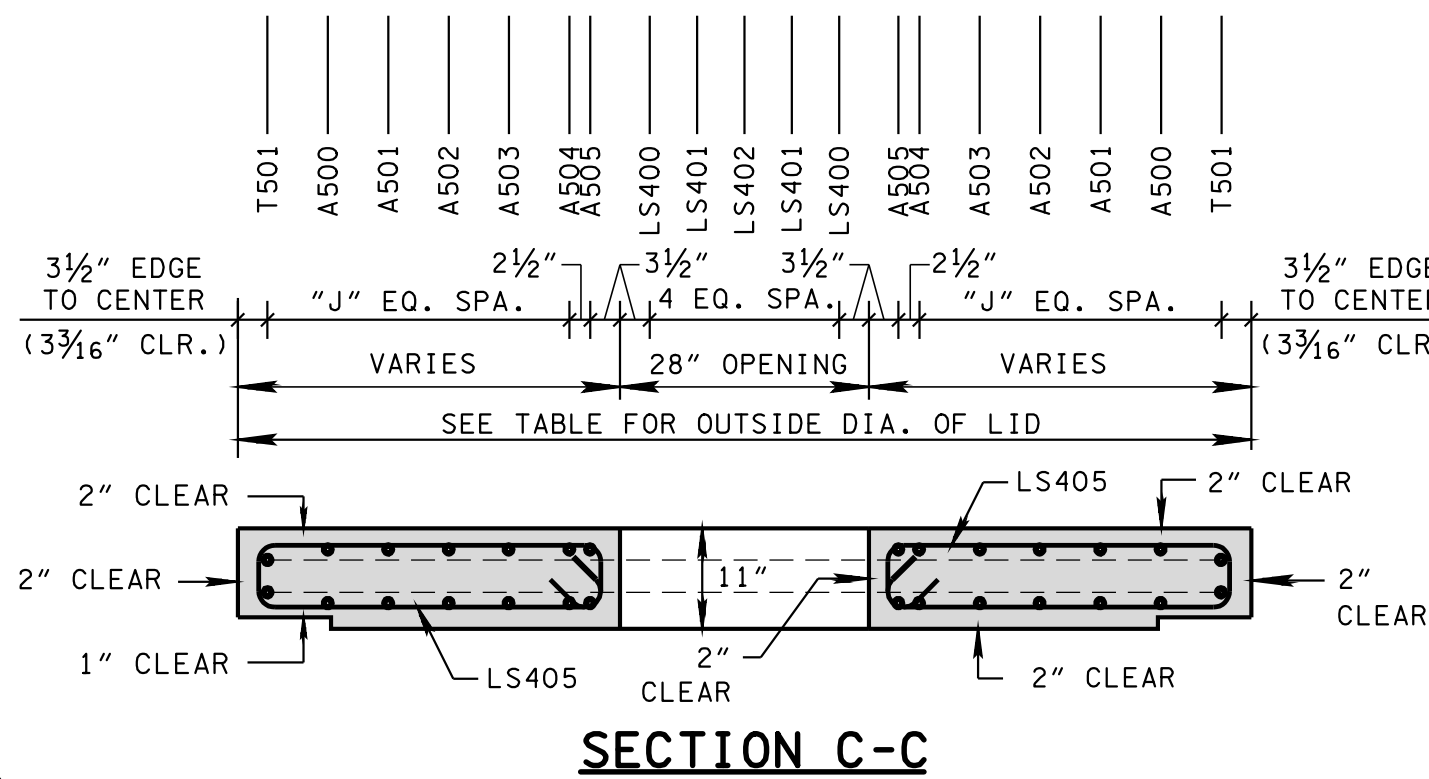
**CATCH BASIN MAXIMUM DEPTH NOTE**  
MAXIMUM DEPTH FOR THIS STRUCTURE IS 40.00'.

CATCH BASIN DIMENSIONS							FOR DESIGN USE ONLY CATCH BASIN MINIMUM DESIGN DEPTH (FEET)			
INSIDE DIAMETER (D) OF PIPE (INCHES)	PIPE WALL THICKNESS (INCHES)	DIAMETER OF CUT-OUT HOLES (INCHES)	PRECAST SECTION HEIGHTS MIN. (INCHES)							
			84"	96"	108"	120"	84"	96"	108"	120"
18	2½	25	57½	59	63½	64	4.34	4.38	4.42	4.46
24	3	32	64½	66	70½	71	4.88	4.92	4.96	5.00
30	3½	39	71½	73	77½	78	5.42	5.46	5.50	5.54
36	4	46	78½	80	84½	85	5.97	6.00	6.04	6.08
42	4½	53	85½	87	91½	92	6.51	6.54	6.58	6.63
48	5	60	92½	94	98½	99	7.05	7.08	7.13	7.17
54	5½	67	99½	101	105½	106	7.59	7.63	7.67	7.71
60	6	74	106½	108	112½	113	8.13	8.17	8.21	8.25
66	6½	81	113½	115	119½	120	8.67	8.71	8.75	8.79
72	7	88	120½	122	126½	127	9.22	9.25	9.29	9.33
78	7½	95	127½	129	133½	134	9.76	9.79	9.83	9.88

VARIABLE REINFORCING DIMENSIONS AND SPACING IN CONCRETE LID		
INSIDE DIA. OF CATCH BASIN (INCHES)	OUTSIDE DIA. OF LID (INCHES)	NO. OF EQUAL SPACES "J"
84	100	5
96	114	6
108	128	7
120	142	8

OUT-TO-OUT DIAMETER FOR T501 REINFORCING BARS EQUALS OUTSIDE DIAMETER OF LID MINUS 6¾ INCHES.

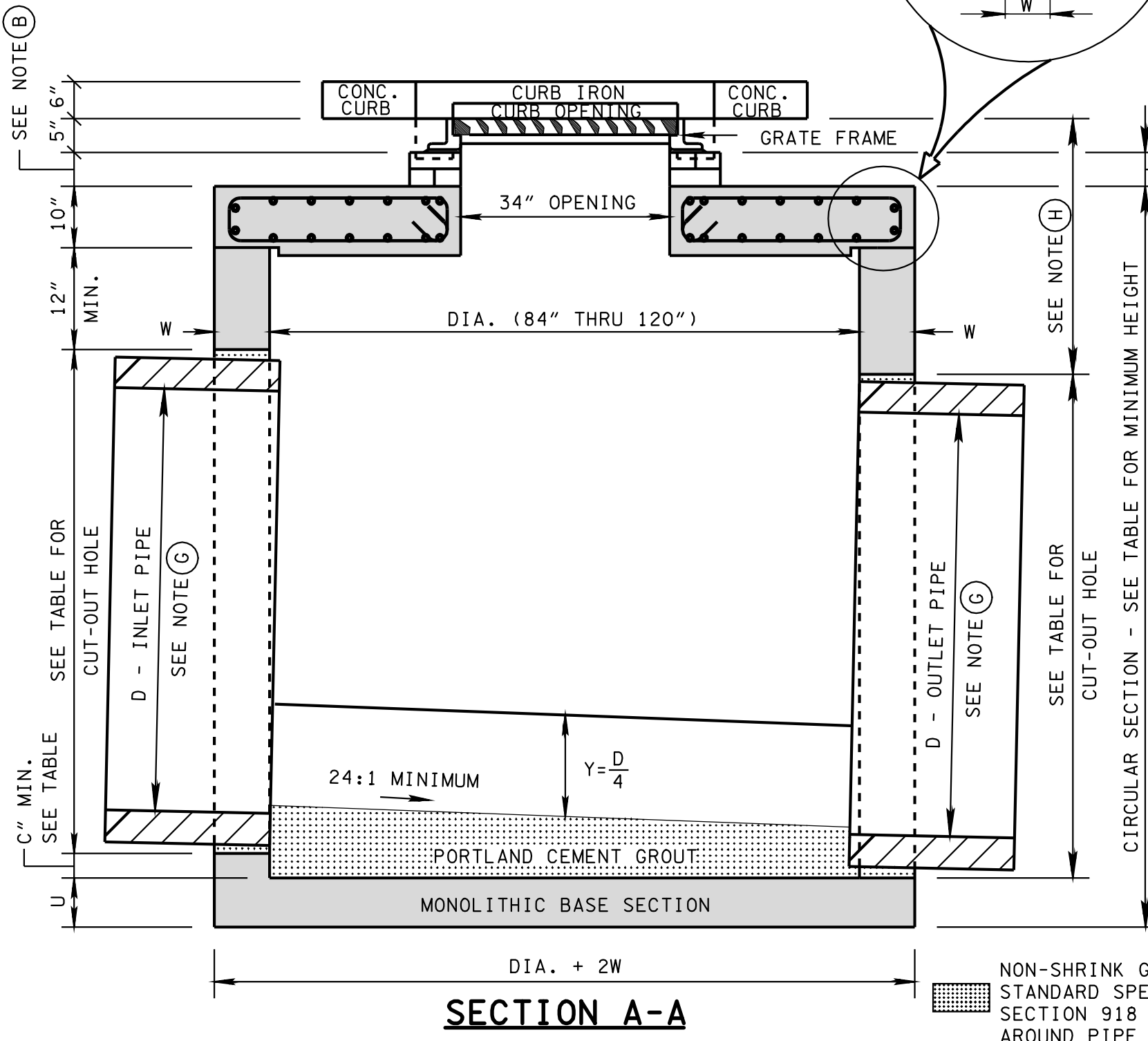
ADDITIONAL A-BARS ARE REQUIRED FOR THE LARGER STRUCTURE AS INDICATED BY "NO. OF EQ. SPACES 'J'".



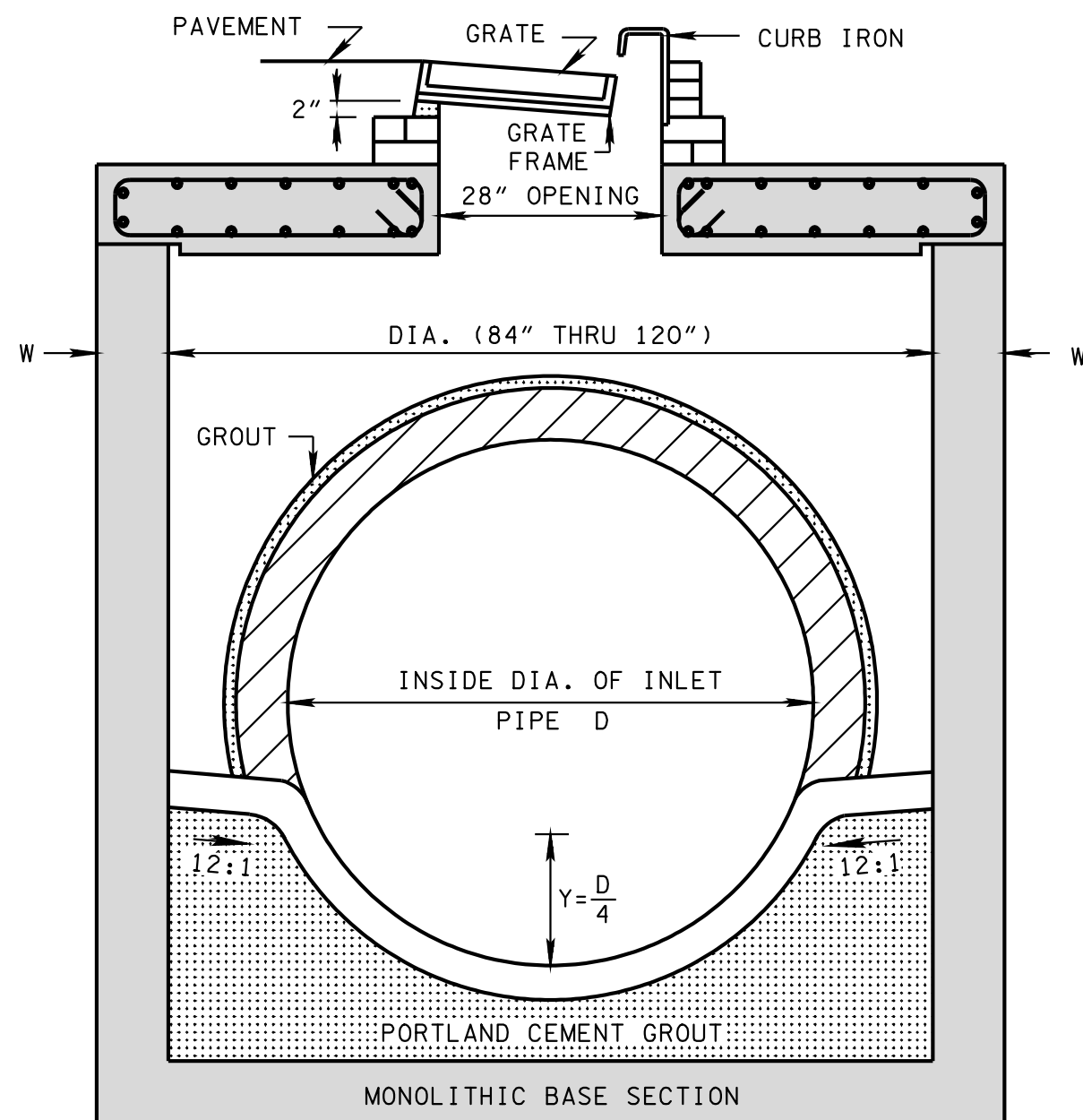
SECTION C-C

GENERAL NOTES

- (A) ALL PRECAST ELEMENTS TO MEET ASTM C478 (CURRENT EDITION) AND AASHTO M199 (CURRENT EDITION) UNLESS SUPERSEDED BY THIS DRAWING.
- CONCRETE:  $f'_c = 4,000$  POUNDS PER SQUARE INCH AT 28 DAYS  
REINFORCING STEEL: ASTM A615,  $F_y = 60,000$  POUNDS PER SQUARE INCH  
ALL REINFORCING IS TO BE INSTALLED AS DETAILED ON THIS DRAWING.
- (B) THIS DIMENSION MAY VARY FROM A MINIMUM OF 0 INCHES TO A MAXIMUM OF 24 INCHES AS LONG AS 27 INCHES IS SATISFIED. THE CONTRACTOR HAS THE OPTION OF USING BRICK OR STANDARD PRECAST CONCRETE RISER FRAMES. THE USE OF BRICK SHALL BE LIMITED TO 6 INCHES. IF THIS DIMENSION EXCEEDS 6 INCHES, PRECAST CONCRETE RISER FRAMES SHALL BE USED AS SHOWN ON STANDARD DRAWING D-RF-1.
- (C) PRECAST CATCH BASIN UNITS WHICH ARE DAMAGED DURING SHIPMENT OR INSTALLATION WILL BE REJECTED. IT SHALL BE THE RESPONSIBILITY OF THE CONTRACTOR TO REPLACE DAMAGED CATCH BASIN UNITS AT HIS OWN EXPENSE.
- (D) APPROPRIATE SIZING AND LOCATION OF LIFTING DEVICES SHALL BE THE RESPONSIBILITY OF THE FABRICATOR.
- (E) THE CONTRACTOR IS TO PATCH ALL LIFTING DEVICE HOLES WITH GROUT AND PLACE A MINIMUM OF ONE (1) INCH OF COVER OVER THE HARDWARE OF THESE DEVICES ON BOTH TOP AND BOTTOM SURFACES.
- (F) ALTERNATIVE JOINT DETAILS MAY BE ACCEPTABLE. SEE STANDARD DRAWING D-CB-99R FOR ADDITIONAL DETAILS.
- (G) SEE ROADWAY PLANS DRAINAGE TABULATION FOR PIPE INLET AND OUTLET ELEVATIONS. IF NEEDED, INVERT ELEVATIONS MAY BE ADJUSTED AS DIRECTED BY THE ENGINEER IN ORDER TO ACCOMMODATE INLET AND OUTLET PIPES.
- (H) FOR CASES WHERE THE OUTLET PIPE DIAMETER IS LARGER THAN THE INLET PIPE DIAMETER, A MINIMUM 27 INCH DEPTH SHALL BE MAINTAINED ABOVE THE OUTLET PIPE.
- (I) SEE STANDARD DRAWING D-CBB-12A FOR DETAILS REGARDING CAST IRON GRATES, FRAMES AND CURB INLETS.
- (J) SEE STANDARD DRAWING D-CB-12RA FOR DETAILS REGARDING 48" CIRCULAR NO. 12 CATCH BASIN (FOR USE WITH 6" NONMOUNTABLE CURB).
- (K) SEE STANDARD DRAWING D-CB-12RB FOR DETAILS REGARDING 60" AND 72" CIRCULAR NO. 12 CATCH BASIN (FOR USE WITH 6" NONMOUNTABLE CURB).
- (L) PAY DEPTH MEASUREMENT MADE FROM TOP OF GRATE TO OUTLET FLOW ELEVATION. PAYMENT FOR CATCH BASIN WILL BE MADE UNDER ITEM NUMBERS 611-12.02 CATCH BASINS, TYPE 12, > 4'-8' DEPTH THROUGH 611-12.07, CATCH BASINS, TYPE 12, > 24'-28' DEPTH PER EACH. PAYMENT FOR CATCH BASINS DEEPER THAN 28' WILL BE MADE UNDER ITEM NUMBER 611-12.08, CATCH BASINS, TYPE 12, \_\_\_\_' - \_\_\_\_' DEPTH PER EACH. PAYMENT INCLUDES RISER SECTION AND GRATE.



SECTION A-A



SECTION B-B

CATCH BASIN DIMENSIONS							DIMENSION C (INCHES)
INSIDE DIA. OF CATCH BASIN DIA. (INCHES)	WALL THICKNESS W (INCHES)	LID THICKNESS L (INCHES)	BASE THICKNESS U (INCHES)	OUTSIDE DIA. OF CATCH BASIN DIA. + 2W (INCHES)	MAX. INLET OR OUTLET CONC. PIPE SIZE - STR. (INCHES)	MAX. INLET OR OUTLET CONC. PIPE SIZE - 90° (INCHES)	
84	8	10	8	100	60	36	3.5
96	9	10	8	114	66	42	4.0
108	10	10	12	128	72	48	4.5
120	11	10	12	142	78	54	5.0

MINOR REVISION -- FHWA APPROVAL NOT REQUIRED.

STATE OF TENNESSEE  
DEPARTMENT OF TRANSPORTATION

STANDARD PRECAST  
84" THRU 120"  
CIRCULAR NO. 12  
CATCH BASIN  
(FOR USE WITH 6" NONMOUNTABLE CURB)